



LANDSCAPE MASTERPLAN

OCTOBER 2021

spiire

THE
North
QUARTER

The North Quarter Landscape Master Plan was commissioned by THE NORTH QUARTER Pty Ltd and was prepared by Spiire Australia, 144 Welsford Street, Shepparton VIC 3630

© OCTOBER 2021 Spiire Australia

The information contained in this document is intended solely for the use of the client named for the purpose for which it has been prepared and no representation is made or is to be implied as being made to any third party. Other than for the exclusive use of the named client, no part of this report may be reproduced, stored in a retrieval system or transmitted in any form or by any means, electronic, mechanical, photocopying or otherwise, without the prior written permission of Spiire.

G:\30\307926\LANDSCAPE\GRAPHICS\307926_THE NORTH QUARTER_LANDSCAPE MASTER PLAN.INDD

STATUS	DATE	COMPILED BY	AUTHORISED
Preliminary Draft	10.08.2021	LG	JE
Final Draft	22.09.2021	LG	JE
Final Landscape Master plan	05.10.2021	LG	JE



CONTENTS

01	THE NORTH QUARTER LANDSCAPE VISION	4
02	LANDSCAPE MASTER PLAN	6
03	ENTRY/ STREET SCAPE FEATURES	8
04	LOCAL PARK & DRAINAGE RESERVE	10
05	STREET TREE MASTER PLAN	12
06	MATERIALS PALETTE	14
07	INDICATIVE PLANT SPECIES	15

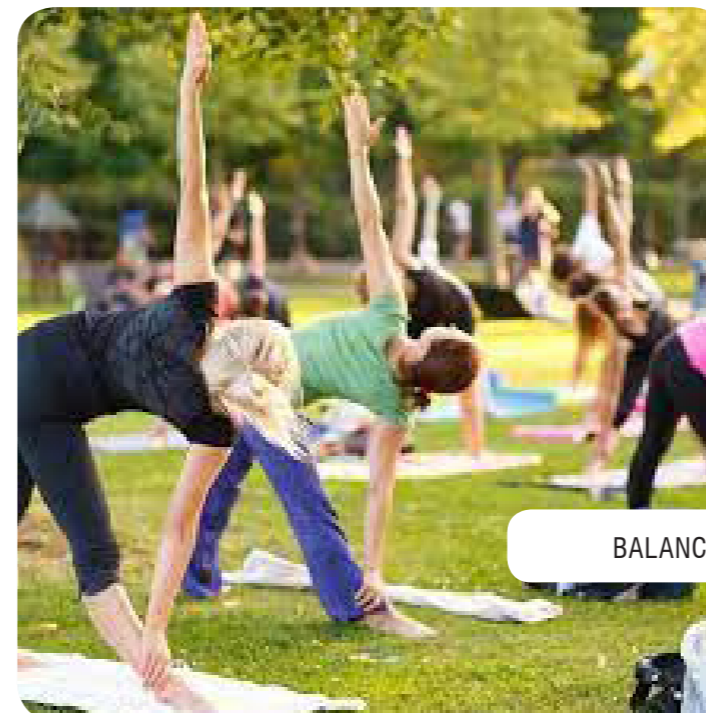
THE NORTH QUARTER LANDSCAPE VISION

The landscape vision for The North Quarter takes its cues from the seasonality of the Shepparton climate and the former use of the site as a fruit orchard. Residences will be encouraged all year round to connect and engage with the landscape through a variety of quality passive and active experiences including active walking and cycling connections, shared user paths, a local playground, open space offering, connection to water and opportunity to participate in pop-up events within community nodes.

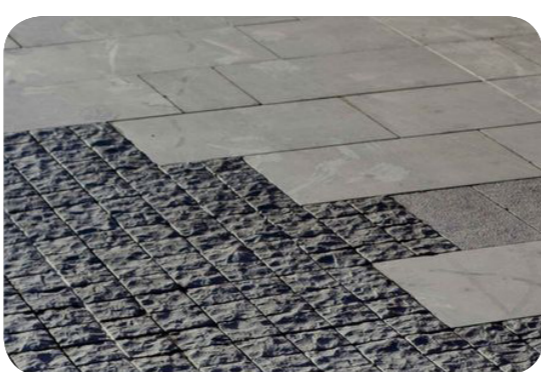
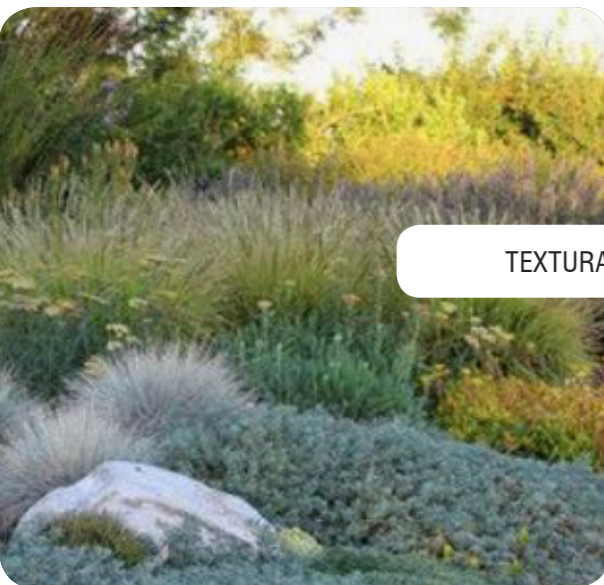
The development will include a dynamic and centrally connected community node which includes open space areas, a wetland with striking architectural viewing platforms, bespoke local park for the enjoyment of all children and space for pop-up events including food truck festivals and Christmas carols.

The vision for the site has shaped the language of the Landscape Master plan for The North Quarter. Key principles include:

- ▶ High amenity, quality landscape elements creating a strong sense of place and relate to the local context and identity of place
- ▶ A focus on seasonal and textural plantings throughout the parks, wetland and streetscapes that also supports the community's value of the place in which they live.
- ▶ A balance of playful and healthy landscapes.
- ▶ A landscape that connects the community to each other and more broadly to the Shepparton region and adjacent services offerings including GV Health, great schools and the sporting precincts.



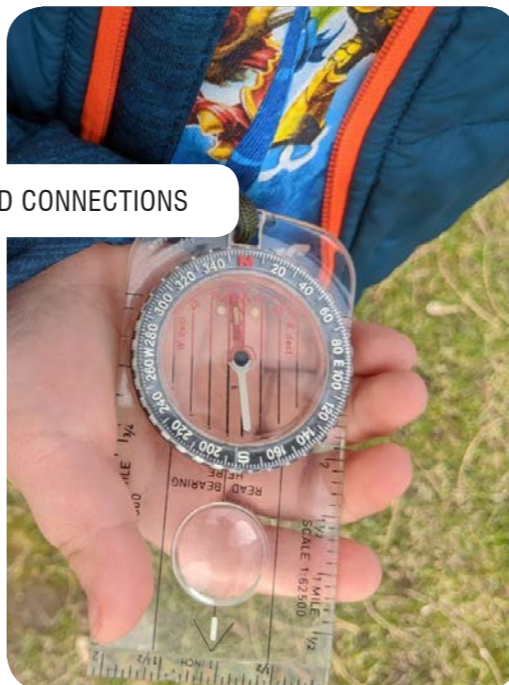
TEXTURAL QUALITIES



SEASONALITY



NEIGHBORHOOD CONNECTIONS



LOCAL COMMUNITY NODES



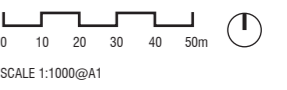
LOCAL PARK

LANDSCAPE MASTER PLAN

OVERALL SITE

LEGEND

- 1 Estate Entry Statement
- 2 Drainage Reserve (by Civil)
- 3 Open Space 1
- 4 Village Green
- 5 Electrical Reserve
- 6 Pump Station Reserve





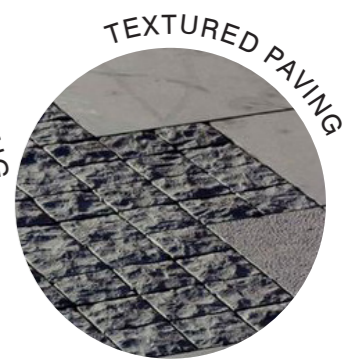
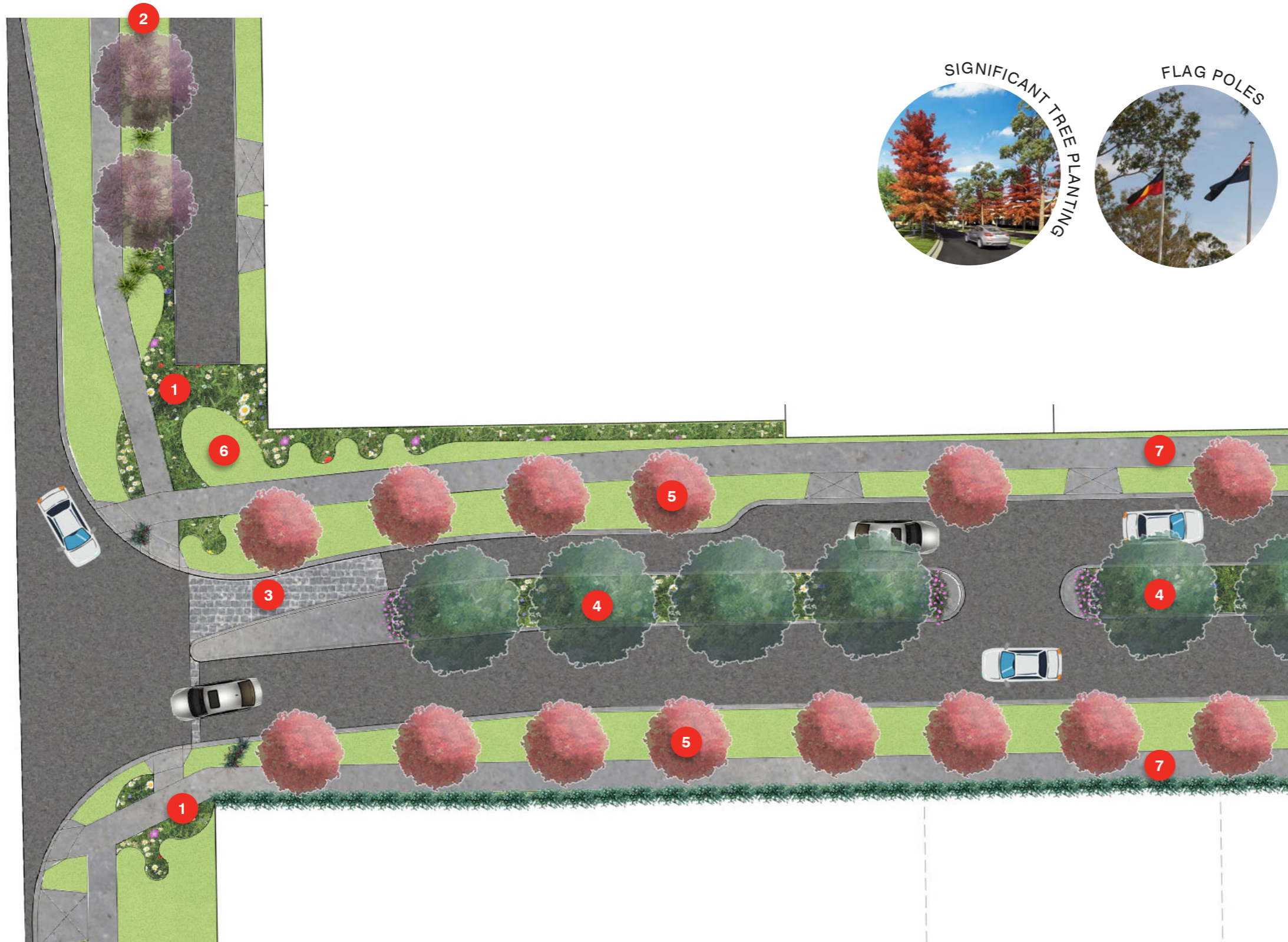
The North Quarter - Local Park and Drainage Reserve



The North Quarter - Local Park and Drainage Reserve

ARRIVAL EXPERIENCE/ ENTRY FEATURE

VERNEY ROAD



LEGEND

- 1 Patterned Planting
- 2 Drainage Swale
- 3 Decorative cobble paving
- 4 Evergreen Trees
- 5 Deciduous Trees
- 6 Space for Flagpoles/ Signage
- 7 Shared pathway



LOCAL PARK & DRAINAGE RESERVE OPEN SPACE



LEGEND

- 1** Shared path network
- 2** Seating node
- 3** Viewing platform with 6 x seater picnic setting and bins
- 4** Drainage Reserve
- 5** Community node for pop-up events
- 6** Kick-about space
- 7** Multi-Sensory Local playground 800m2 including:
 - Sandpit and rock boulder steppers
 - Weaving forest
 - Sensory grass planting
 - 3 x seater bench seating
 - Swings
 - I Spy Mound (with telescope, binoculars and compass)
 - Balance beams
 - Shade sale
- 8** Textural plantings
- 9** Estate Entry Signage





The North Quarter - Local Park and Drainage Reserve

STREET TREE MASTER PLAN

THE NORTH QUARTER, SHEPPARTON VIC

OVERVIEW

The street tree selection has been informed by the landscape character of The North Quarter Development and species have been informed by the Landscape Plan Guide for Developments and Greater Shepparton City Councils Urban Forest Strategy.

Age, genus, size and shape diversity have been considered to ensure a sustainable tree population and that an emphasis on shade exists within the development. A mix of exotic species are a blended throughout the developments streetscapes. Deciduous varieties have been selected for their seasonal colour, form and suitability to conditions. Native species are mixed throughout the open spaces areas. Native and indigenous species create ties to the local landscape and create habitat for local insects, birds and small mammals.

Streets adjoining parks and open space areas are proposed to have large varieties with varying age ranges and family classification to promote diversity, habitat, longevity and resilience.

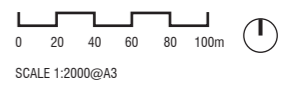
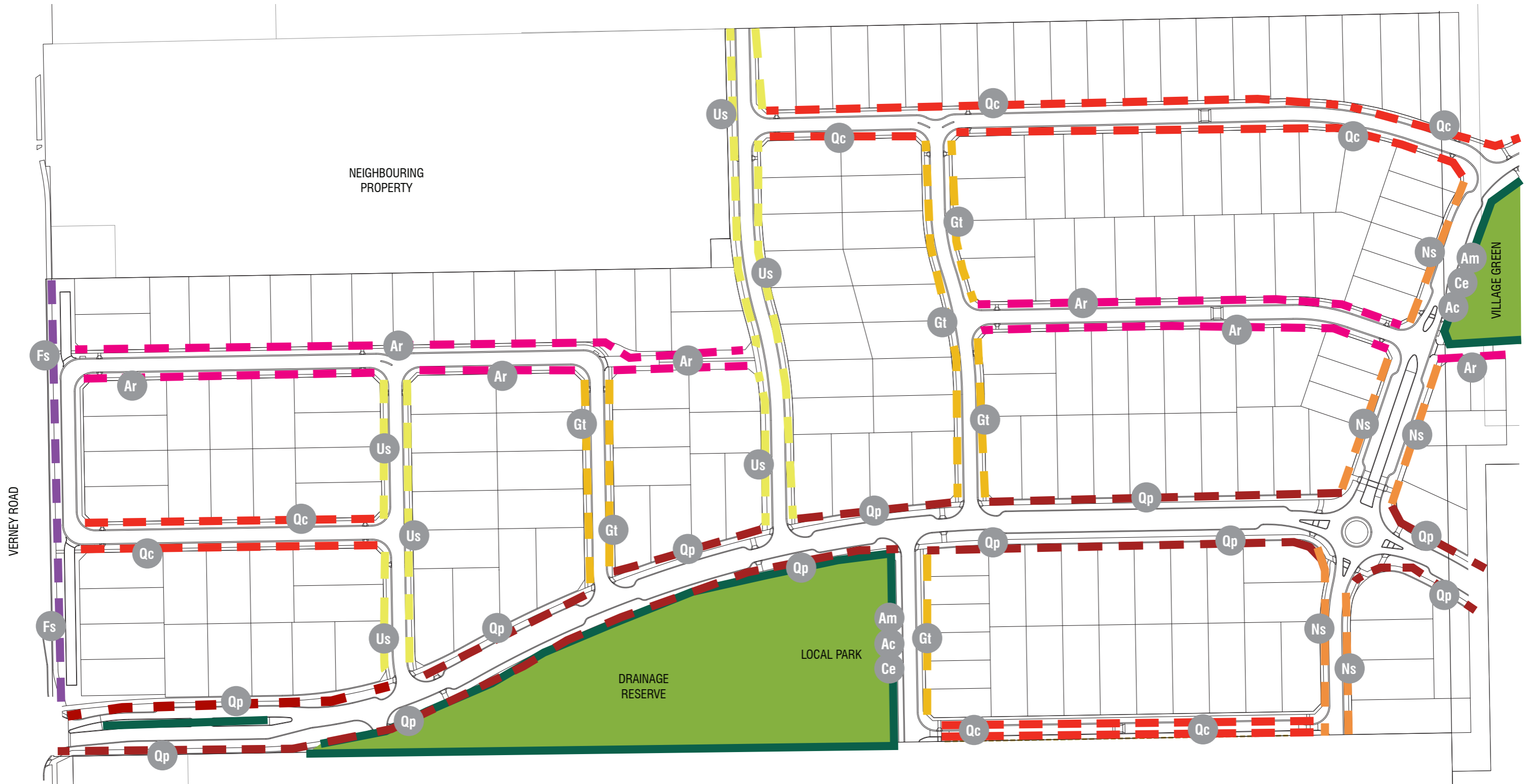
As there is currently very little vegetation in this precinct. Significant planting will be provided around the open spaces and drainage reserve to enhance environmental values.



CODE	BOTANIC NAME	COMMON NAME	MATURE SIZE (h x w)
Am	<i>Acacia melanoxylon</i>	Blackwood	12-15 x 5m
Ar	<i>Acer rubrum October Glory</i>	Lipstick Maple	15 x 9m
Ac	<i>Angophora costata</i>	Smooth-Barked Apple Myrtle	20 x 12m
Ce	<i>Corymbia eximia</i>	Dwarf Yello Bloodwood	6 x 8m
Fs	<i>Fagus sylvatica 'Atropurpurea'</i>	Copper Beech, Purple Beech	13 x 9m
Gt	<i>Gleditsia triacanthos</i>	Shademaster	11 x 8m
Ns	<i>Nyssa sylvatica</i>	Black Tupelo	11 x 6m
Qc	<i>Quercus cocinea</i>	Scarlet Oak	12 x 8m
Qp	<i>Quercus palustris</i>	Oak - Pin Oak	20 x 8m
Us	<i>Ulmus 'Sapporo Autumn Gold'</i>	Autumn Gold Elm	15 x 10m

LEGEND

- Ac TREE REFERENCE CODE
- EVERGREEN TREE VARIETIES
- PARKS/ OPEN SPACE
- DECIDUOUS TREE VARIETIES



MATERIALS PALETTE

OPEN SPACE AREAS



PLAIN GREY
CONCRETE



WASHED SAND



TIMBER



EXPOSED
AGGREGATE



SOFTFALL MULCH



ORGANIC MULCH



LOCAL TIMBER &
ROCKS



TEXTURED PAVING

INDICATIVE PLANT SPECIES

OPEN SPACE AREAS

Trees



Acacia melanoxylon
- Blackwood



Angophora costata
Smooth-Barked
Apple Myrtle



Corymbia citriodora
'Scentuous' - Dwarf
Lemon-scented
Gum

Shrubs



Acacia paradoxa
Kangaroo Thorn



Callistemon sieberi
'Sugar Candy'
Bottlebrush



Correa glabra
Rock Correa



Dillwynia
cinerascens
Grey Parrot-Pea



Indigofera australis
Australian Indigo



Leucophyta brownii
Cushion Bush



Stachys byzantina
Lamb's Ear

Grasses and
Groundcovers



Bergenia cordifolia
Heartleaf Bergenia



Calytrix tetragona
Common Fringe-
Myrtle



Carex appressa
Tall Sedge



Enchylaena tomentosa
Ruby Saltbush



Ficinia nodosa
Knobby Club Rush



Kennedia prostrata
Running Postman



Lomandra confertifolia
'Little Con'
Mat Rush



Melaleuca 'Ulladulla
Beacon'
Paperbark



Callistemon viminalis
'Little John'
Dwarf Bottlebrush



Philotheca
myoporoides
Long-leaf Wax-flower



Poa labillardieri
'Eskdale'
Common Tussock
Grass



Rhagodia spinescens
Spiny Saltbush



Scaevola varieties
Fan Flower



Senecio vitalis 'Serpents'
Narrow Leaf Blue
Chalksticks

ALBURY | BENDIGO | CANBERRA | GEELONG | MELBOURNE | SHEPPARTON

spiire